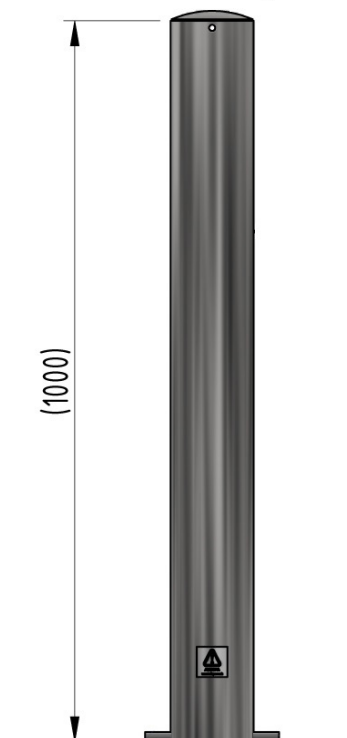
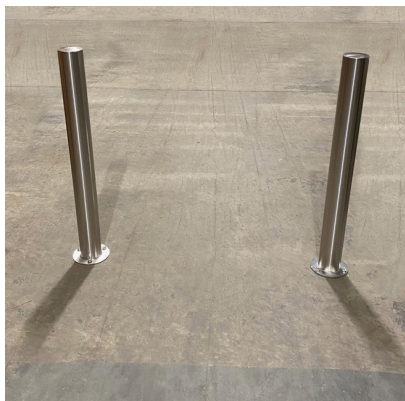


Plain Round Bollard 1000mm Above Ground 48mm - 204mm Diameter Stainless Steel - Bolt Down



AUTOPA's range of Plain Round Stainless Steel Bollards is a simple and elegant way of controlling vehicle parking and access. Plain Round Stainless Steel Bollards are ideal for use around pedestrian precincts, shops, pavements, play and parking areas, as part of traffic calming measures, pedestrianisation schemes and as a deterrent to ram-raiders.

The complete range of Plain Round Stainless Steel Bollards are available in diameters from 48mm to 204mm in Grade 304 or Grade 316 and available with extended legs for casting into concrete or with a flange plate for bolting down.

Removable versions are also available.

<u>Part Number</u>	<u>Description</u>	<u>Weight (kg)</u>
138 125 047	48mm Stainless Steel Grade 304	4kg
138 125 062	60mm Stainless Steel Grade 304	4kg
138 125 077	76mm Stainless Steel Grade 304	5kg
138 125 091	89mm Stainless Steel Grade 304	6kg
138 125 106	101mm Stainless Steel Grade 304	7kg
138 125 116	114mm Stainless Steel Grade 304	8kg
138 125 130	129mm Stainless Steel Grade 304	9kg
138 125 137	139mm Stainless Steel Grade 304	9kg
138 125 153	154mm Stainless Steel Grade 304	10kg
138 125 173	168mm Stainless Steel Grade 304	11kg
138 125 206	204mm Stainless Steel Grade 304	14kg

Product details

- 2mm wall thickness
- Round flange plate – 5mm thick, diameter depends on bollard diameter
- 3 bolts required per bollard (bolt down)
- Flange plate diameter ranges from 120mm - 305mm

Installation & use

Bolt down to a suitable concrete surface.
Telescopic, removable and concrete in are supplied with welded fixing spikes to ensure firm ground anchorage into concrete.
Telescopic, removable and concrete in require a suitable excavated hole for installing into concrete.
Products are guaranteed for 12 months (if installed and used correctly).

01283 248681

sales@thebollardcentre.co.uk

